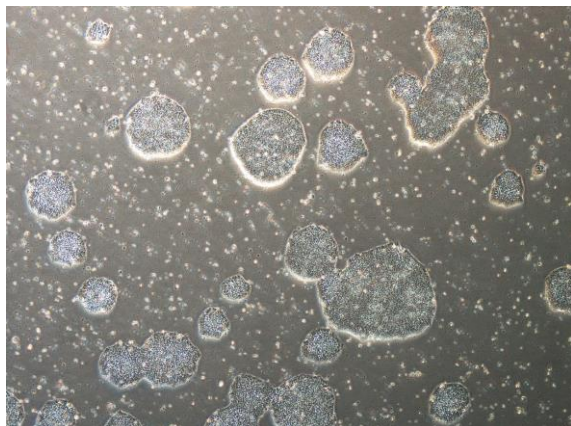
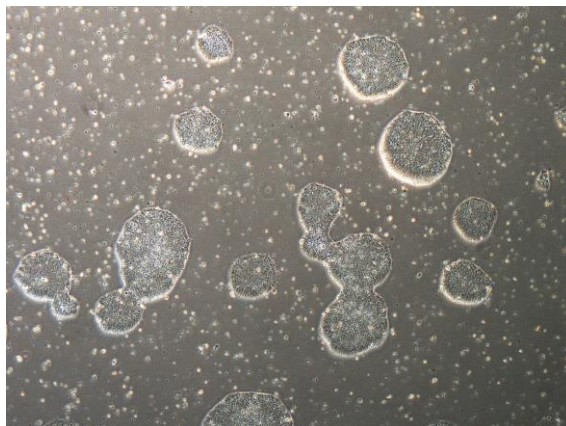


【 CiRA-j-1610 】 Morphology of iPSC colonies

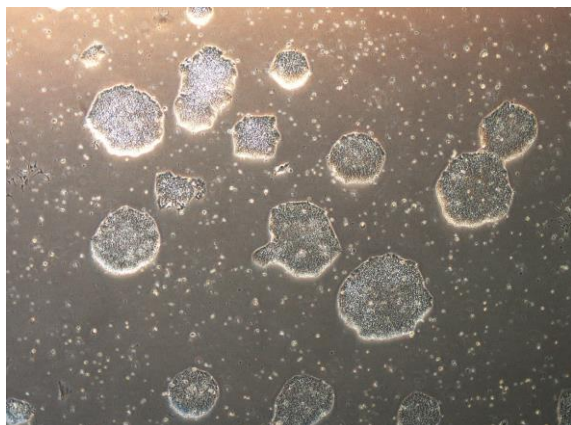
CiRA-j-1610-A: passage-3



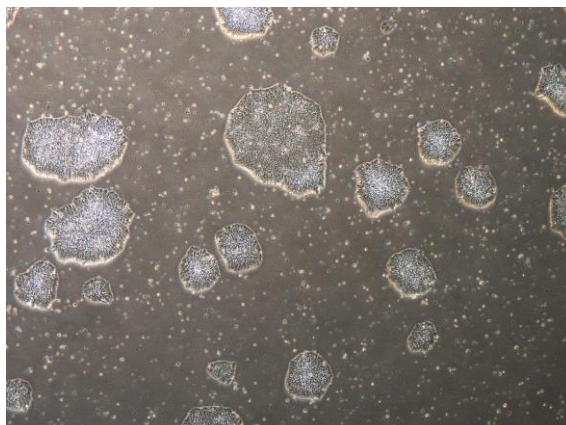
CiRA-j-1610-B: passage-3



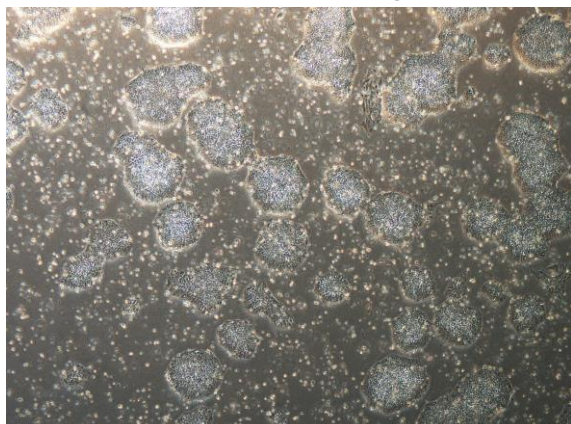
CiRA-j-1610-C: passage-3



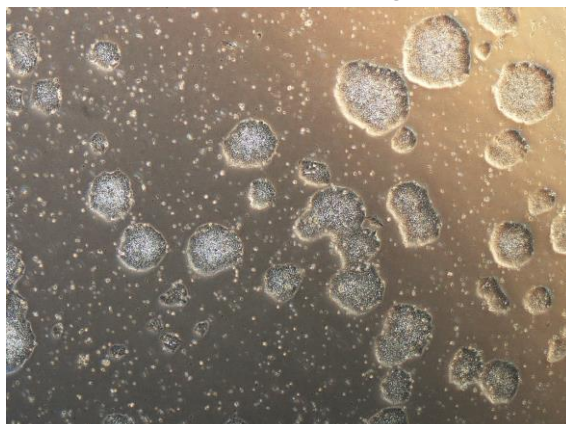
CiRA-j-1610-D: passage-3



CiRA-j-1610-E: passage-3



CiRA-j-1610-F: passage-3



(All images were captured at 4x magnification)